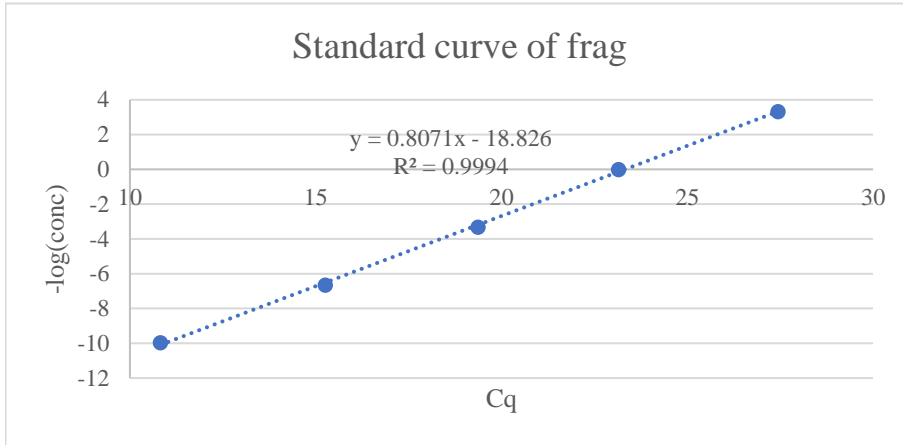


Table S5 Establishment for standard curve

Concentration of 5' frag (pg/ul)	$-\log(C,2)$	Cq_{standard}
1000	-9.965784285	10.82
100	-6.64385619	15.26
10	-3.321928095	19.37
1	0	23.15
0.1	3.321928095	27.44



Calculation for the content of 5' frag packaged in biosome samples

$$C_{\text{sample}} = 2^{(18.826 - 0.8071 Cq_{\text{sample}})}$$

Notes

C refers to the concentration of 5' frag DNA standard; Cq_{standard} refers to the Cq of 5' frag DNA standard samples;

C_{sample} refers to the content of 5' frag RNA packaged in biosome samples; Cq_{sample} refers to the Cq of the 5' frag RNA packaged in biosome samples