

Supporting Information for

Discovering Cathodic Biocompatibility for Aqueous Zn-MnO₂ Battery: An Integrating Biomass Carbon Strategy

Wei Lv^{1,*}, Zilei Shen¹, Xudong Li¹, Jingwen Meng¹, Weijie Yang², Fang Ding^{3,*}, Xing Ju¹, Feng Ye¹, Yiming Li⁴, Xuefeng Lyu¹, Miaomiao Wang¹, Yonglan Tian¹, Chao Xu^{1,*}

¹ Institute of Energy Power Innovation, North China Electric Power University, Beijing 102206, People's Republic of China

² Department of Power Engineering, School of Energy, Power and Mechanical Engineering, North China Electric Power University, Baoding 071003, People's Republic of China

³ Key Laboratory of RNA Biology, Institute of Biophysics, Chinese Academy of Sciences, Beijing 100101, People's Republic of China

⁴ Collaborative Innovation Center of Integrated Exploitation of Bayan Obo Multi-Metal Resources, Inner Mongolia University of Science and Technology, Baotou 014010, People's Republic of China

*Corresponding authors. E-mail: luidavid@126.com (Wei Lv); dingfang0707@ibp.ac.cn (Fang Ding); mechxu@ncepu.edu.cn (Chao Xu)

Supplementary Figures

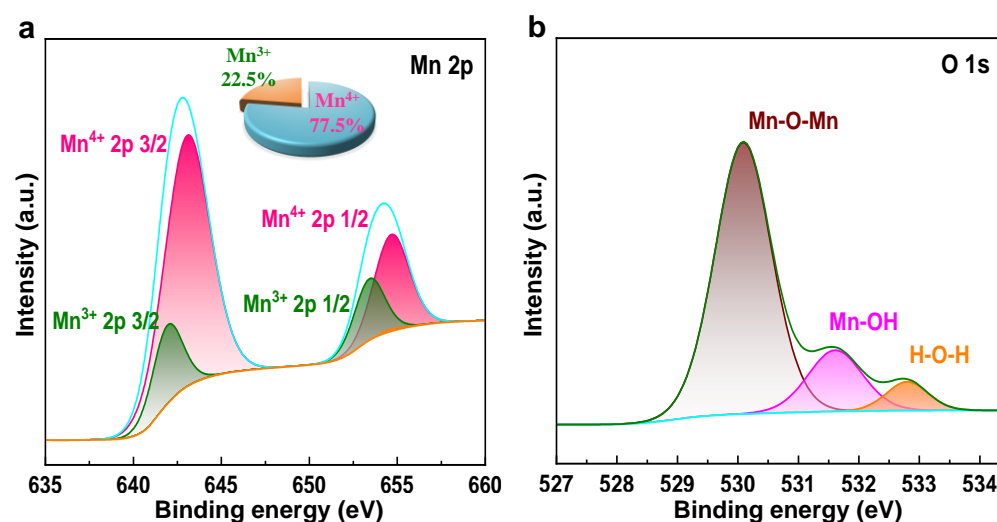


Fig. S1 XPS high-resolution patterns about **a** Mn 2p and **b** O 1s of CP-0

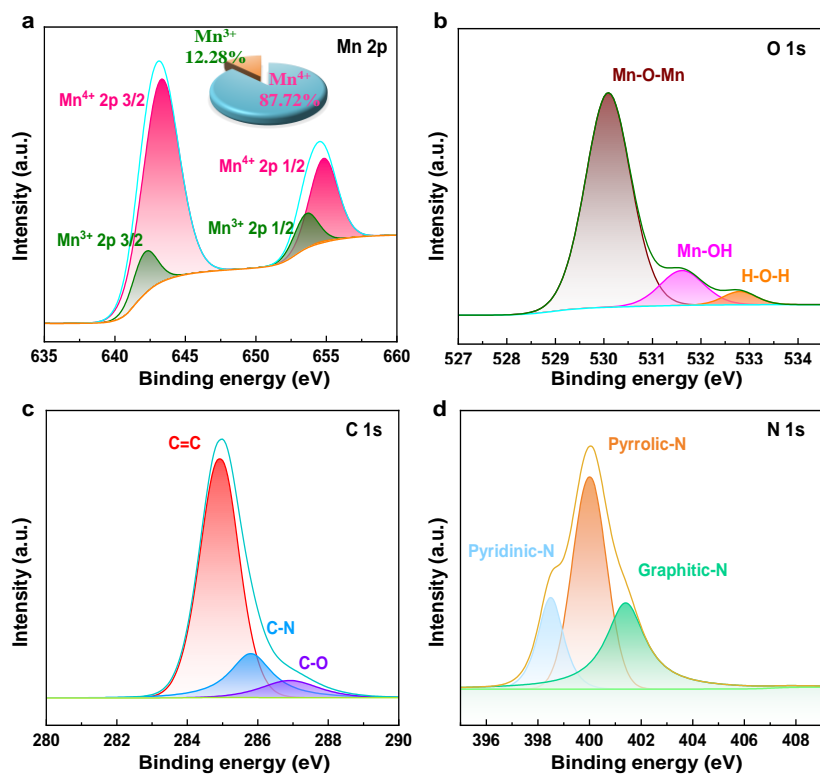


Fig. S2 XPS high-resolution patterns about **a** Mn 2p, **b** O 1s, **c** C 1s, and **d** N 1s of CP-10

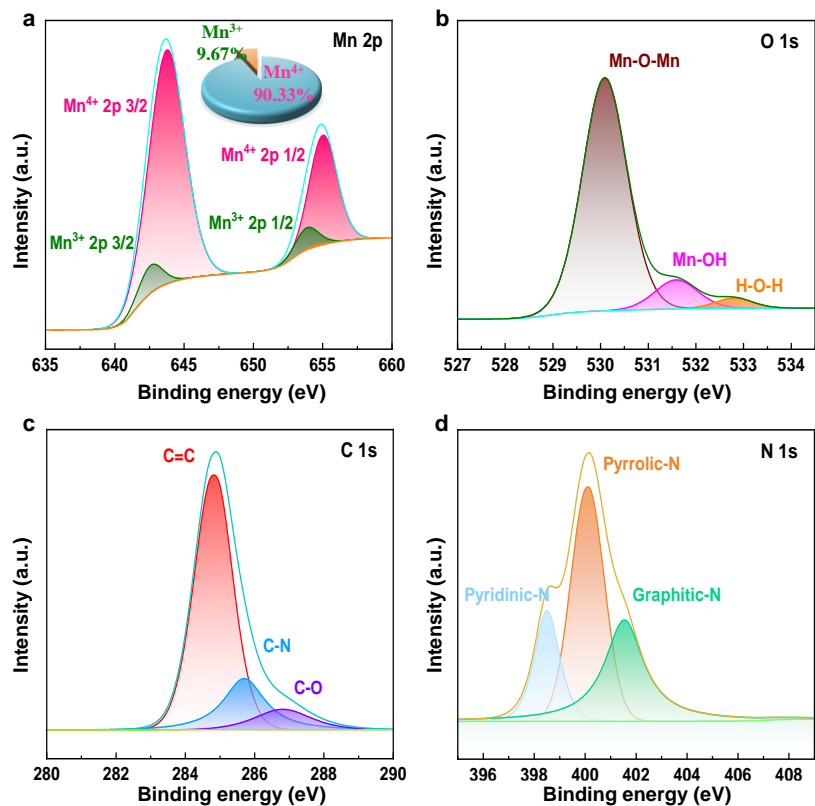


Fig. S3 XPS high-resolution patterns about **a** Mn 2p, **b** O 1s, **c** C 1s, and **d** N 1s of CP-30

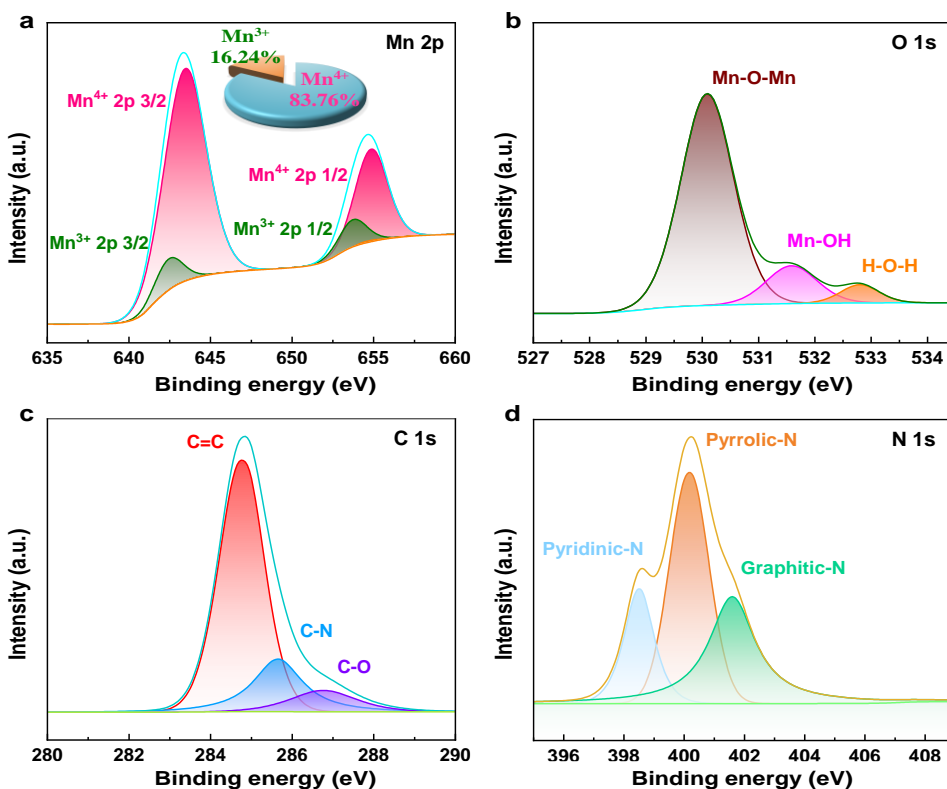


Fig. S4 XPS high-resolution patterns about **a** Mn 2p, **b** O 1s, **c** C1s, and **d** N1s of CP-40

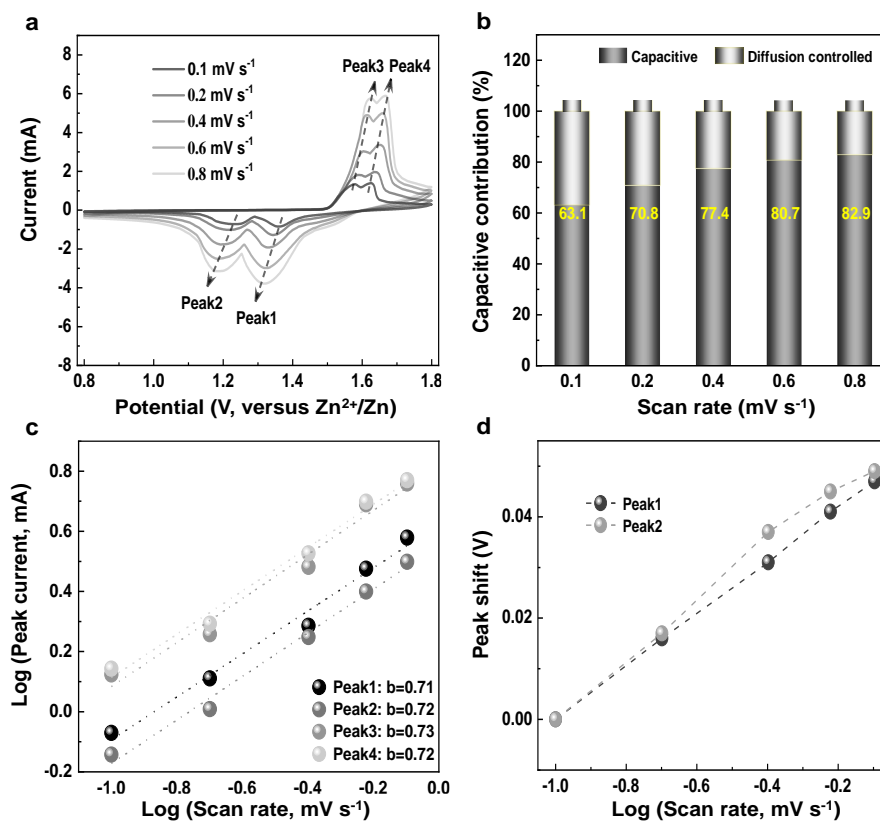


Fig. S5 The **a** CV curves, **b** pseudocapacitive contribution, **c** *b*-value fitting results, and **d** cathodic peak1 and peak2 variation at different scan rate of CP-0

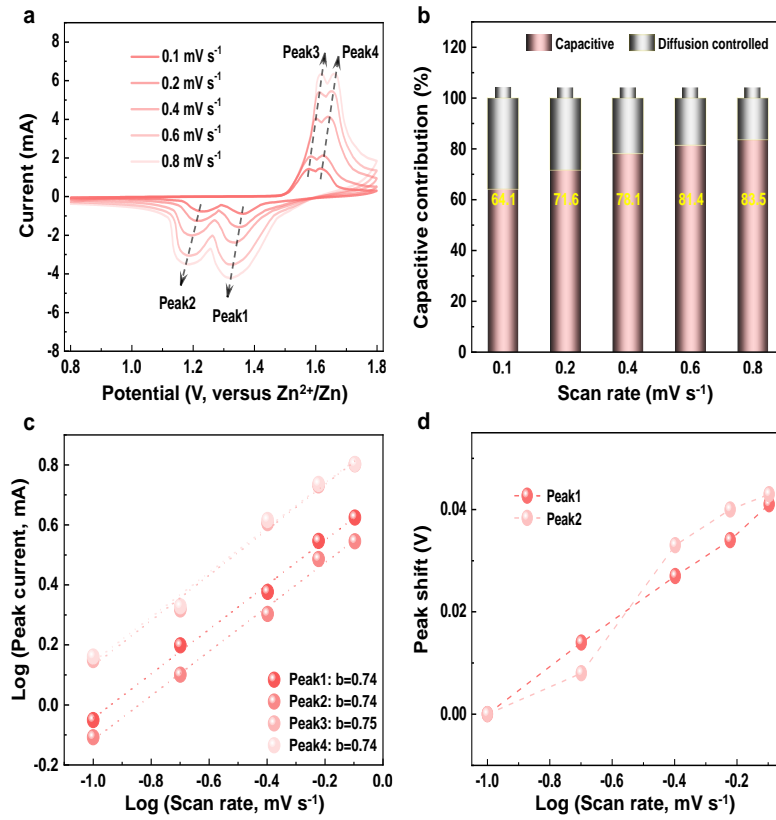


Fig. S6 **a** CV curves, **b** pseudocapacitive contribution, **c** *b*-value fitting results, and **d** cathodic peak1 and peak2 variation at different scan rate of CP-10

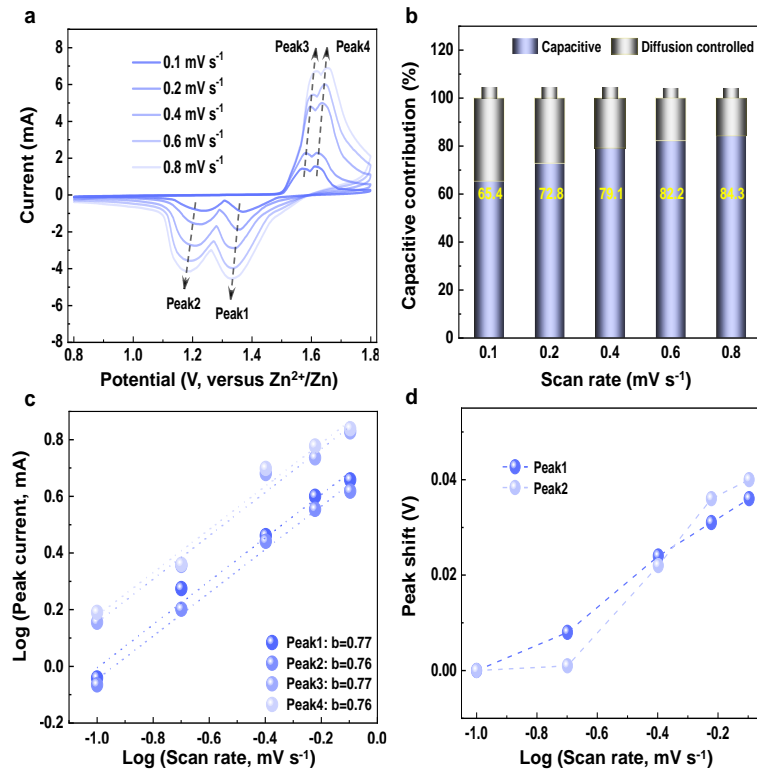


Fig. S7 The **a** CV curves, **b** pseudocapacitive contribution, **c** *b*-value fitting results, and **d** cathodic peak1 and peak2 variation at different scan rate of CP-20

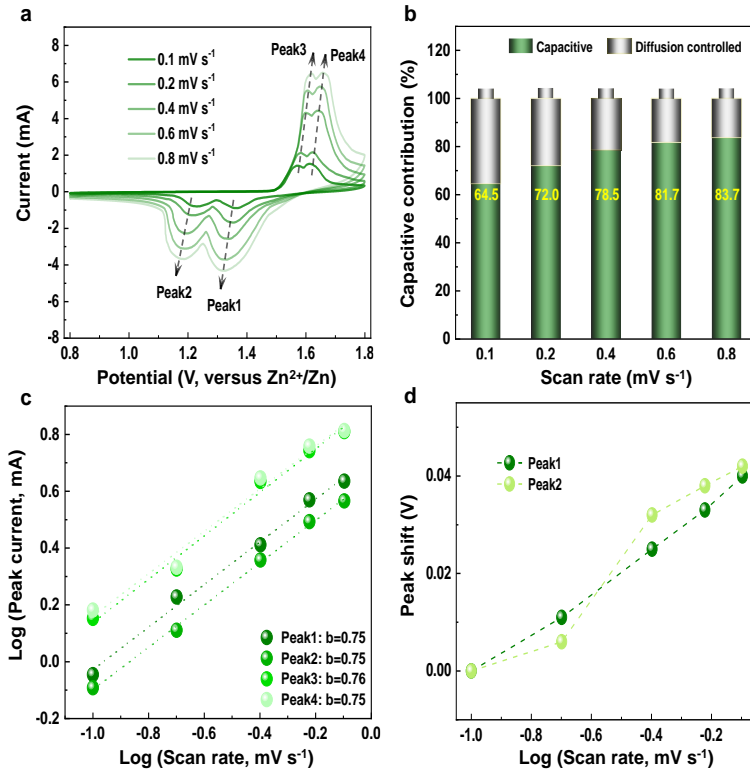


Fig. S8 a CV curves, b pseudocapacitive contribution, c *b*-value fitting results, and d cathodic peak1 and peak2 variation at different scan rate of CP-30

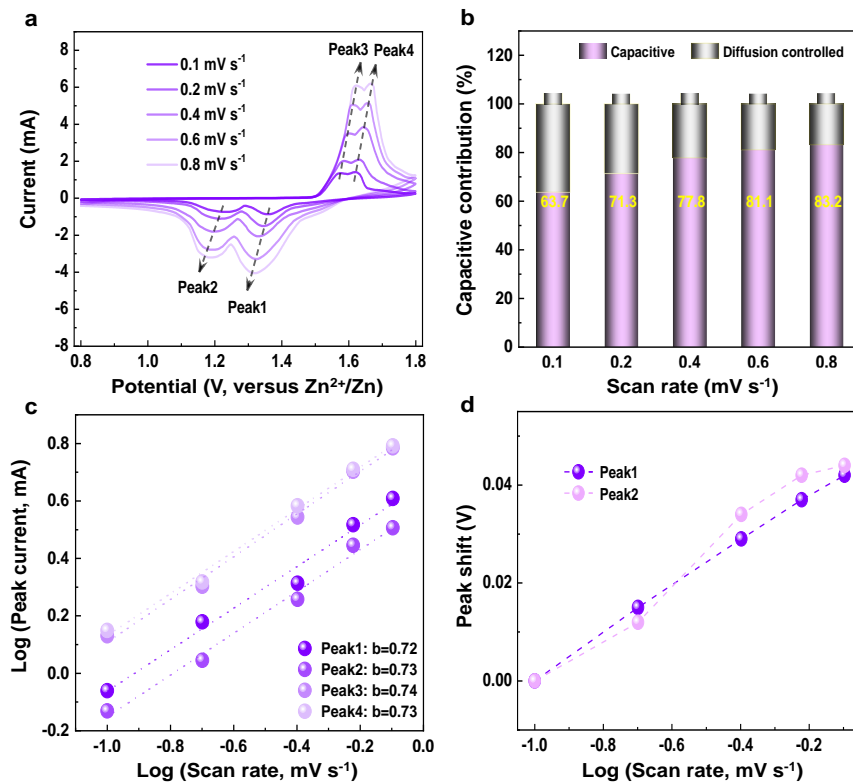


Fig. S9 a CV curves, b pseudocapacitive contribution, c *b*-value fitting results, and d cathodic peak1 and peak2 variation at different scan rate of CP-40 at different scan rate of CP-40