

Supporting Information for

A Flexible and Lightweight Biomass-Reinforced Microwave

Absorber

Yan Cheng^{1, ‡}, Justin Zhu Yeow Seow^{2, 3, ‡}, Huanqin Zhao¹, Zhichuan J. Xu^{2, 3, *},
Guangbin Ji^{1, *}

¹College of Materials Science and Technology, Nanjing University of Aeronautics and Astronautics, Nanjing 210016, People's Republic of China

²School of Materials Sciences and Engineering, Nanyang Technological University, 50 Nanyang Avenue, Singapore 639798

³Singapore-HUJ Alliance for Research and Enterprise, NEW-CREATE Phase II, Campus for Research Excellence and Technological Enterprise (CREATE), Singapore 138602

‡Yan Cheng and Justin Zhu Yeow Seow contributed equally to this work

*Corresponding authors. E-mail: gbji@nuaa.edu.cn (Guangbin Ji),

xuzc@ntu.edu.sg (Zhichuan J. Xu)

Supplementary Figures

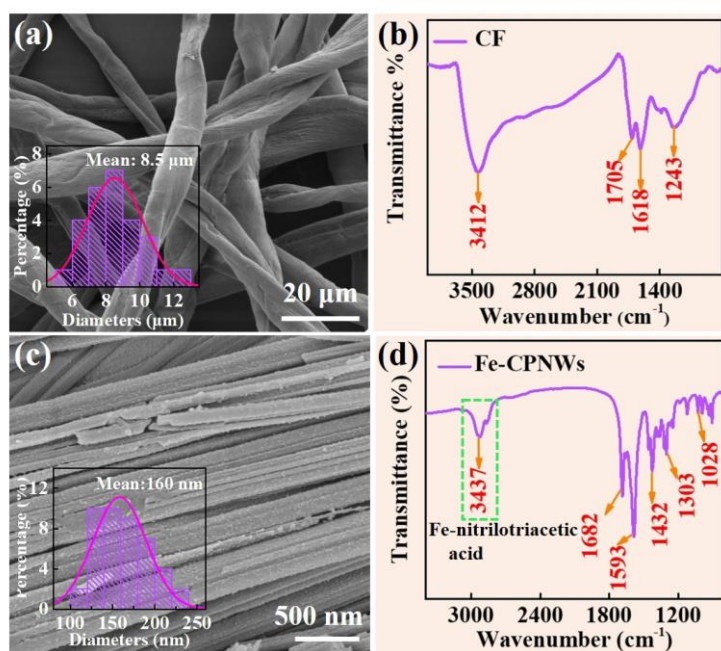


Fig. S1 (a) SEM images of cotton-derived CFs, (b) FT-IR spectrum of CFs, (c) SEM image of Fe-CPNWs, and (d) diameter distribution of Fe-CPNWs

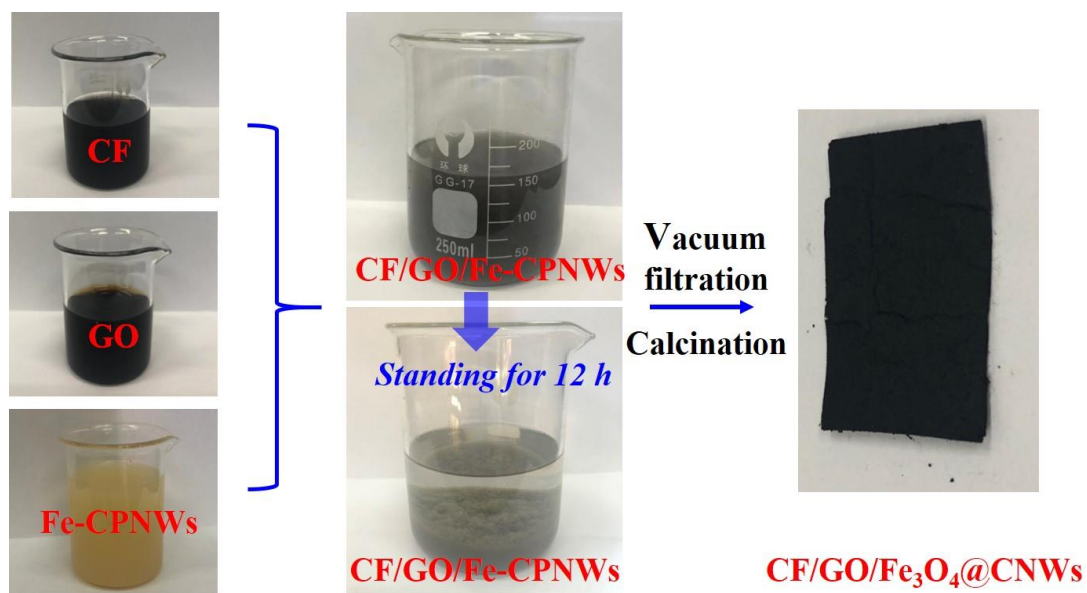


Fig. S2 Assembly of CF/GO/Fe-CPNWs from CF-containing ethanol, GO solution and Fe-CPNW-containing ethanol



Fig. S3 Digital image of S0

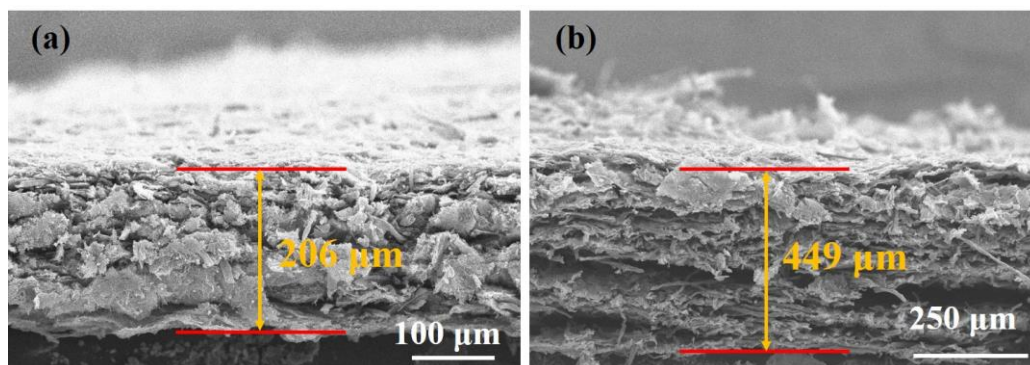


Fig. S4 Cross-sectional SEM images of (a) S1 and (b) S2

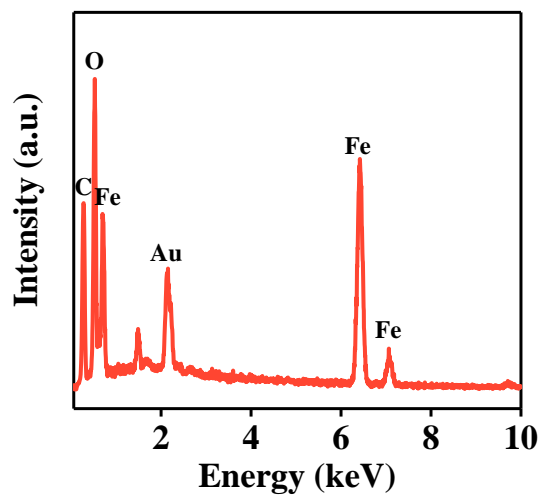


Fig. S5 EDS spectrum of S2

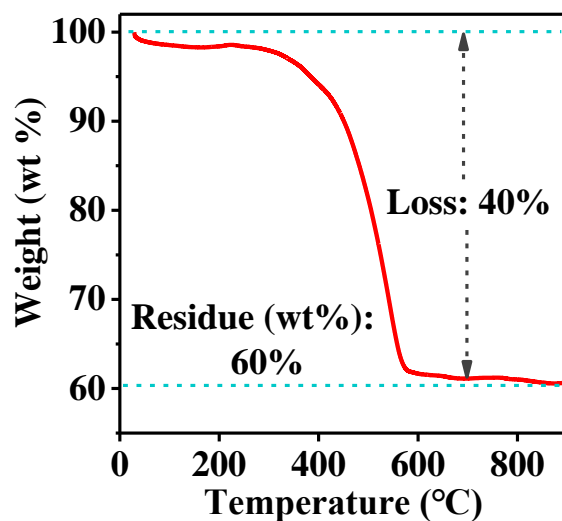


Fig. S6 TG curve of S2

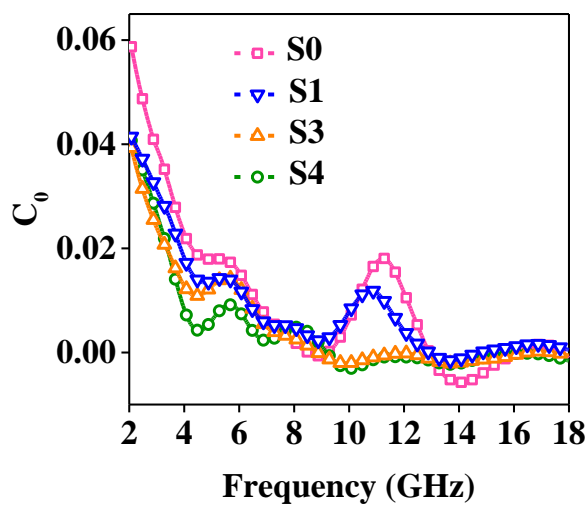


Fig. S7 The eddy current coefficient C_0 of all samples