

Supporting Information for

One Stone Four Birds— A Novel Liposomal Delivery System Multi-Functionalized with Ginsenoside Rh2 for Tumor Targeting Therapy

Chao Hong¹, Jianming Liang^{1,2}, Jiakuan Xia¹, Ying Zhu³, Yizhen Guo¹, Anni Wang¹, Chunyi Lu⁴, Hongwei Ren¹, Chen Chen¹, Shiyi Li¹, Dan Wang^{1,5}, Huaxing Zhan⁵, Jianxin Wang^{1,6,*}

¹Department of Pharmaceutics, School of Pharmacy, Fudan University & Key Laboratory of Smart Drug Delivery, Ministry of Education, Shanghai 201203, People's Republic of China

²Institute of Tropical Medicine, Guangzhou University of Chinese Medicine, Guangzhou 510006, People's Republic of China

³Institute of Clinical Pharmacology, Guangzhou University of Traditional Chinese Medicine, Guangzhou 510006, People's Republic of China

⁴School of Pharmacy, Shanghai Jiao Tong University, Shanghai 200240, People's Republic of China

⁵Shanghai Ginposome Pharmatech Co., Ltd, Shanghai 201600, People's Republic of China

⁶Institute of Integrated Chinese and Western Medicine, Fudan University, Shanghai 200040, People's Republic of China

*Corresponding author. E-mail: jxwang@fudan.edu.cn (Jianxin Wang)

Supplementary Figures

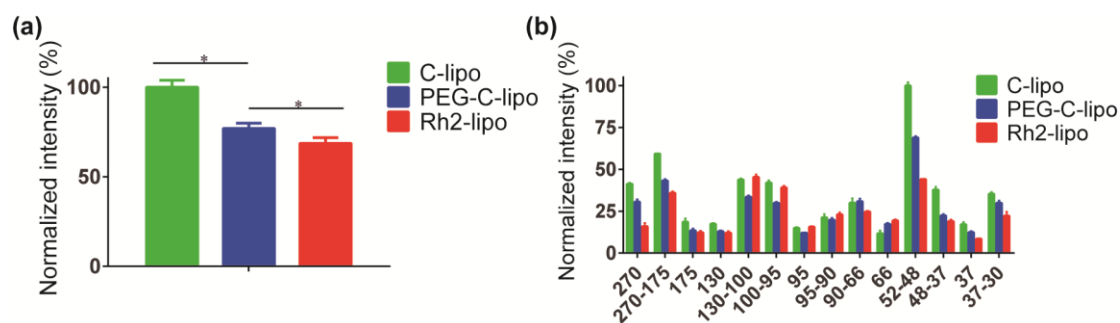


Fig. S1 a Histograms representing the total lane intensity of proteins in SDS-PAGE gel recovered from different groups (n = 2; mean ± SD). *P < 0.05. **b** Lane intensity results of fourteen molecular weight ranges in SDS-PAGE gel

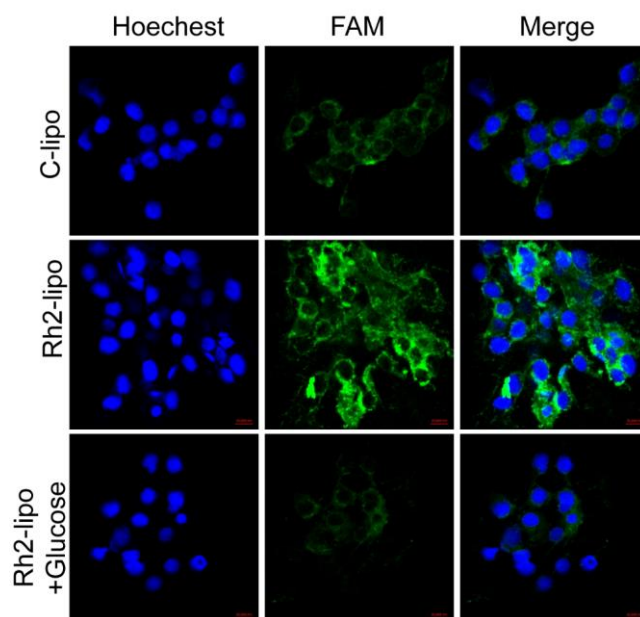


Fig. S2 Qualitative cellular uptake of FAM-labeled liposomes in 4T1 cells. The cells were incubated with 500 ng mL^{-1} FAM-loaded liposomes at $37 \text{ }^\circ\text{C}$ for 4 h ($n = 3$; mean \pm SD); scale bar = $20 \text{ }\mu\text{m}$

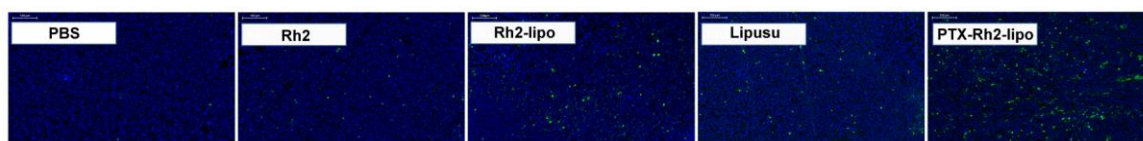


Fig. S3 TUNEL-positive cells in tumor sections excised from the mouse after drug treatments

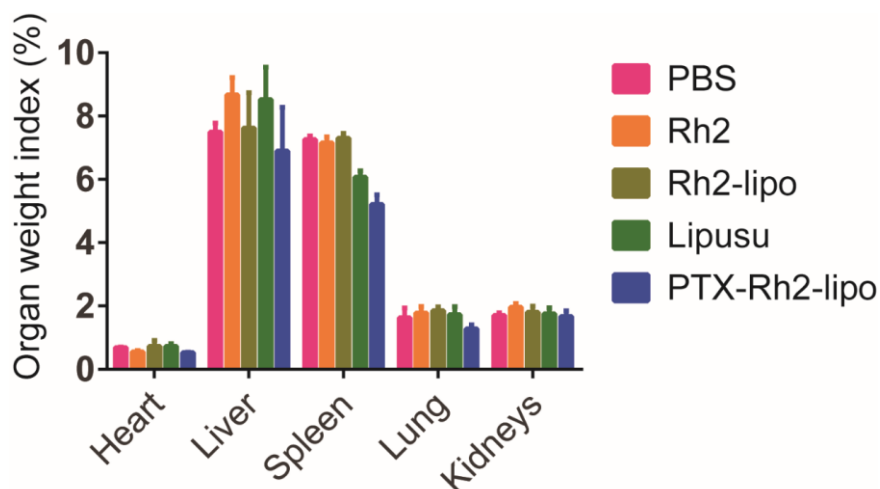


Fig. S4 Organ weight indexes at the termination of anti-tumor experiments

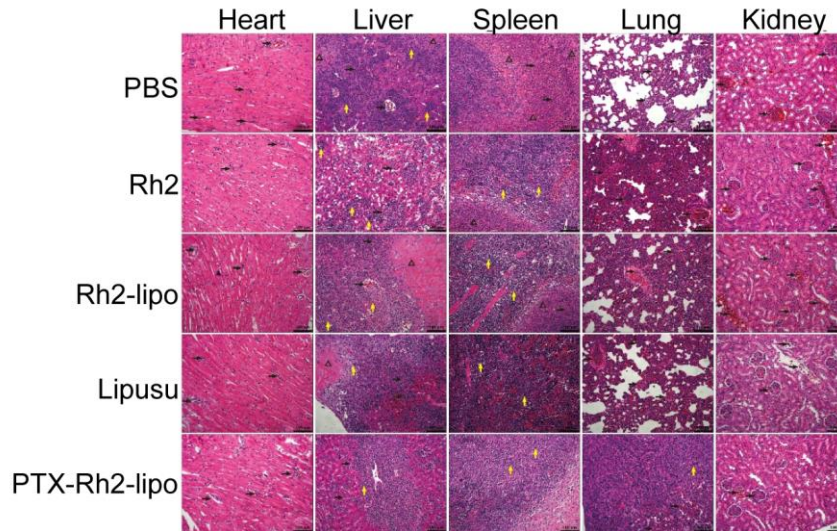


Fig. S5 Representative H&E stained sections of organs. \rightarrow Inflammatory cells; \uparrow Metastatic cancer cells; Δ Necrotic cells

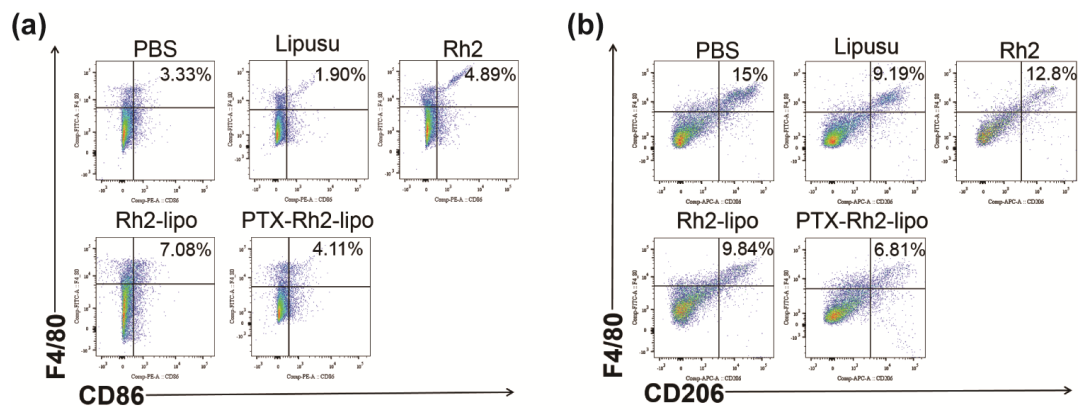


Fig. S6 The percentages of TAM populations with specific macrophage markers M1-type (CD11b⁺/F4/80⁺/CD86⁺) (a) and M2-type (CD11b⁺/F4/80⁺/CD206⁺) (b) in tumor tissues were detected by flow cytometry